



Band Virtual Learning

7th Grade Band

May 6th, 2020

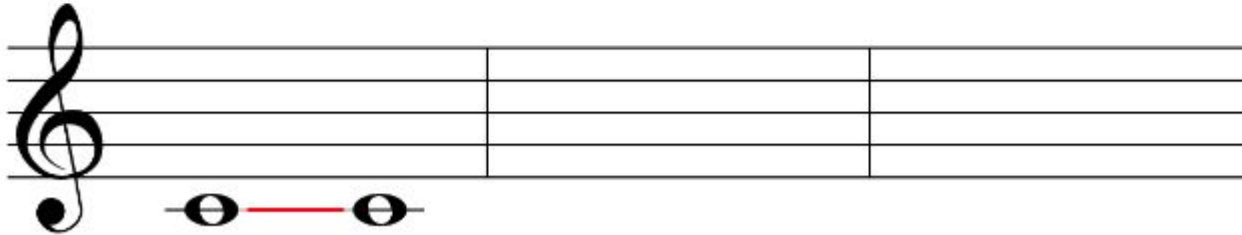


7th Grade Band
Lesson: May 6th 2020

Objective/Learning Target:
Students will be able to identify generic intervals.

Generic Intervals: 1st

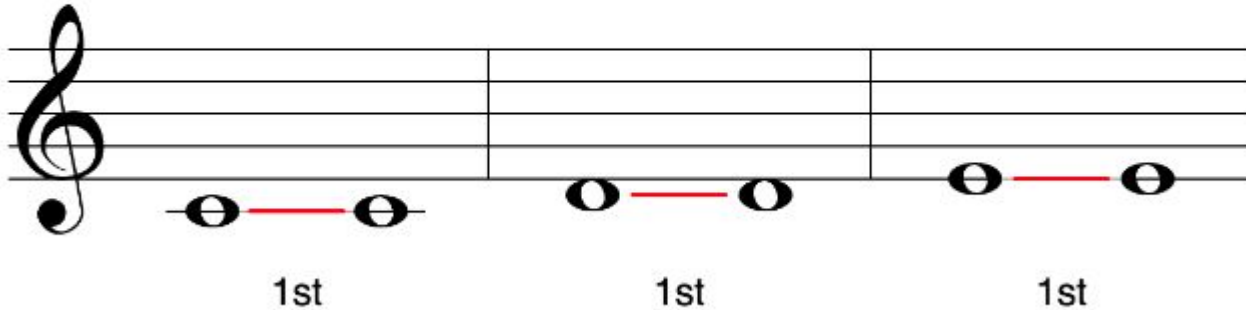
- An **interval** measures the distance between two notes.
 - We will first discuss **generic intervals**, which are measured on the staff.
-
- When two notes occupy the same line or space, they are a **first** (or a **prime**) apart.
 - C to C is an example of a first.



1st

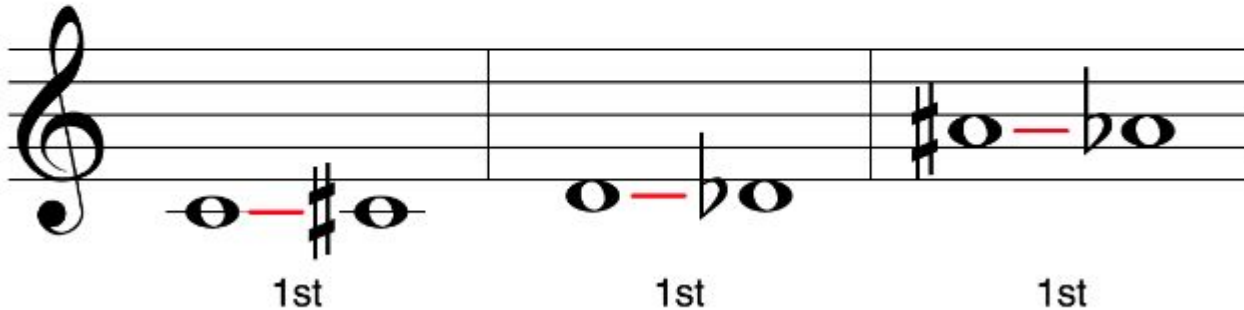
Generic Intervals: 1st

- D to D and E to E are also firsts.



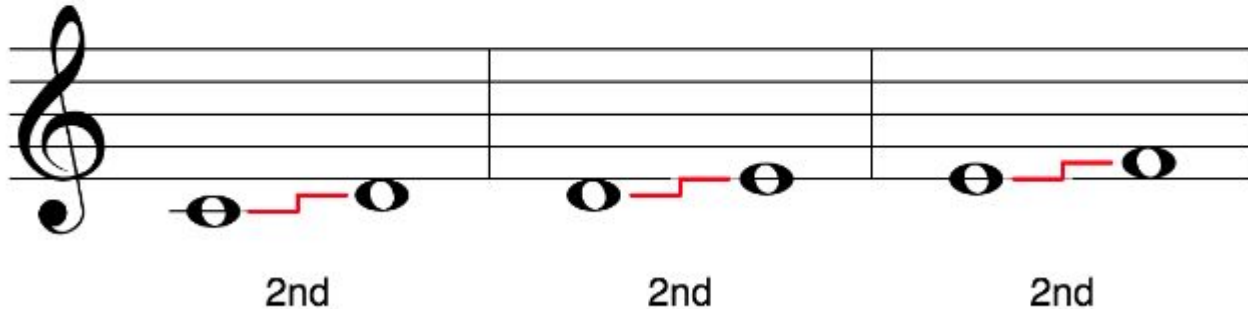
Generic Intervals: 1st

- Accidentals are ignored when measuring generic intervals, only staff position matters.
- C-C#, D-Db, and A#-Ab are still firsts.



Generic Intervals: 2nd

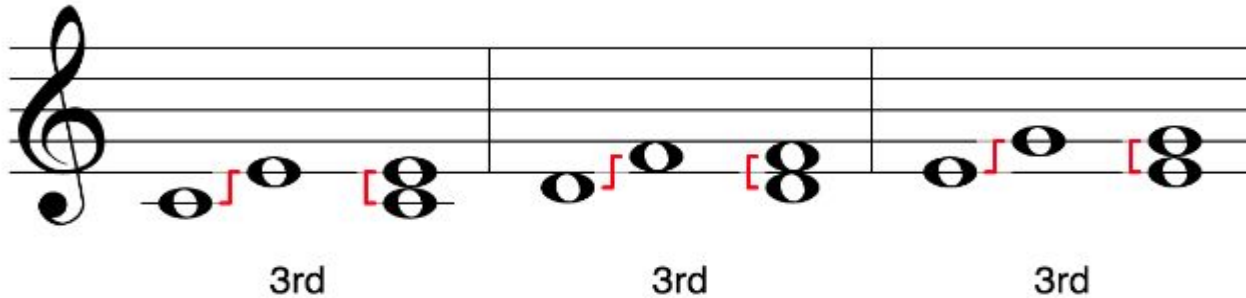
- As the notes become further apart on the staff, the interval type increases.
- C–D, D–E, and E–F are all **seconds**.



Notice, each interval is the next line or space above the first note. C is on the line below the staff and D is the space right above it. D is in the space right below the staff and E is the next line above it. Etc.

Generic Intervals: 3rd

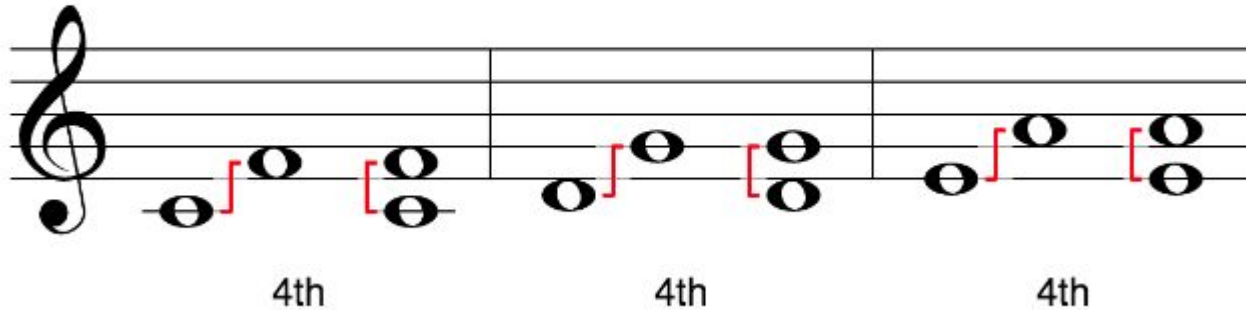
- C–E, D–F, and E–G are all **thirds**.



- Notice that thirds will always share the same staff position type — either both on a line or both on a space.

Generic Intervals: 4th

- C-F, D-G, and E-A are all **fourths**.

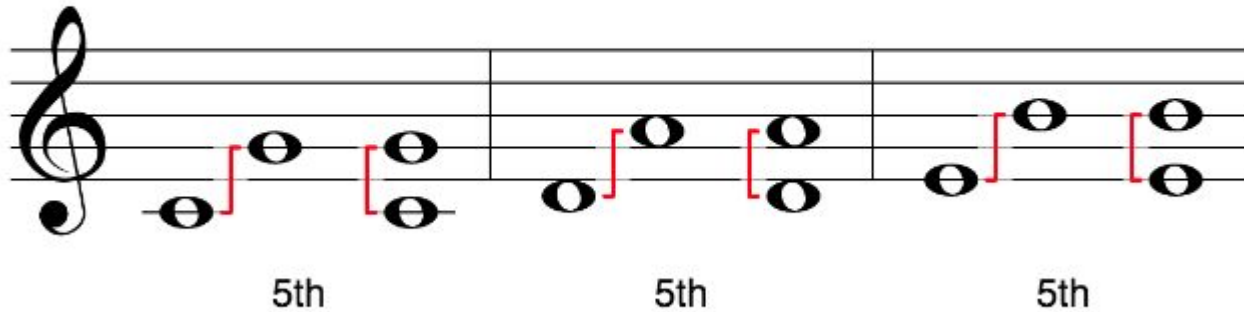


If you count from the starting note up, you will count to 4 for a fourth interval. Example: Starting on C (the first picture) C=1 D=2 E=3 F=4.

This will be true for every interval.

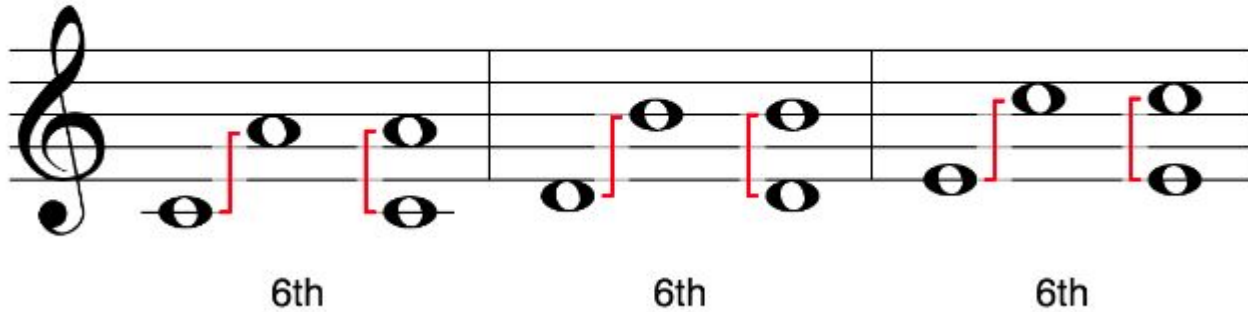
Generic Intervals: 5th

- C-G, D-A, and E-B are all **fifths**.



Generic Intervals: 6th

- C–A, D–B, and E–C are all **sixths**.



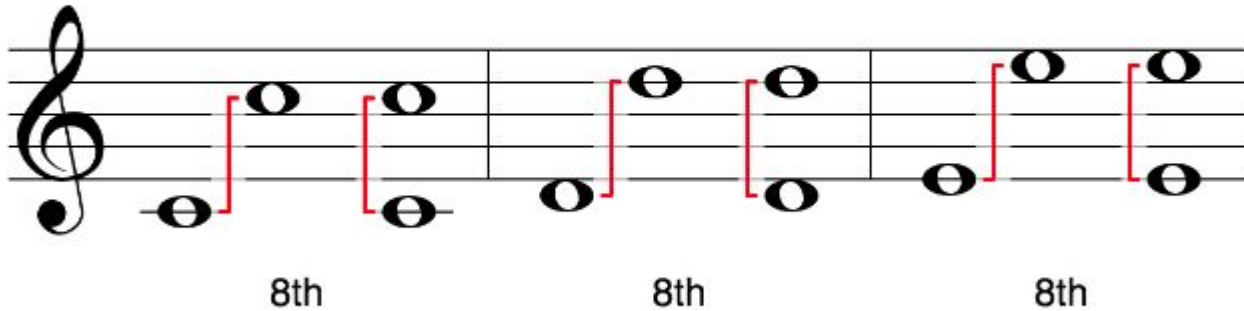
Generic Intervals: 7th

- C-B, D-C, and E-D are all **sevenths**.

The image shows a treble clef staff with three measures. Each measure contains two notes connected by a red bracket, with the label '7th' centered below the bracket. The first measure shows a C4 note on the first line and a B3 note on the space below the first line. The second measure shows a D4 note on the second line and a C4 note on the first line. The third measure shows an E4 note on the second space and a D4 note on the second line.

Generic Intervals: 8th

- C-C, D-D, and E-E are all **eighths**.



Generic Intervals: All

- Use this chart to reference generic intervals.

A musical staff in treble clef showing generic intervals from 1st to 8th. The intervals are represented by pairs of notes on the staff, with the lower note on a line and the upper note on a space. The intervals are: 1st (two notes on the same line), 2nd (one note on a line, one on the next space), 3rd (one note on a line, one on the next line), 4th (one note on a line, one on the next space), 5th (one note on a line, one on the next line), 6th (one note on a line, one on the next space), 7th (one note on a line, one on the next line), and 8th (one note on a line, one on the next space).

Interval	Notes
1st	G4, G4
2nd	G4, A4
3rd	G4, B4
4th	G4, C5
5th	G4, D5
6th	G4, E5
7th	G4, F#5
8th	G4, G5



Practice:

Now it's time to practice!

[Click here for generic interval practice.](#)